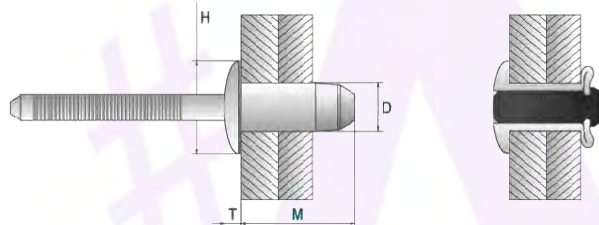


## STRUCTURAL RIVET SRHAA SERIES

<b>Head Type</b>	Dome Head
<b>Material (body / mandrel)</b>	Aluminium / Aluminium
<b>Finish (body / mandrel)</b>	Plain / Plain



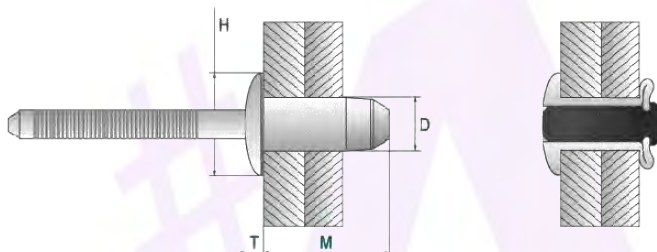
Dimensions in millimetres.

Part Number	Rivet Diameter (D) nom.	Hole Size	Length (M) max.	Grip Range	Head Diameter (H) max.	Head Thickness (T) max.	Standard Strength (Kn) TYP.	
							Shear	Tensile
SRHAA0813	6.4	6.7 ~ 6.9	15.0	2.8 ~ 4.8	13.4	2.6	6.0	2.7
SRHAA0815			17.0	4.8 ~ 6.8			6.5	2.7
SRHAA0817			19.0	6.8 ~ 8.8			7.0	2.7
SRHAA0819			21.0	8.8 ~ 10.8			7.0	2.7
SRHAA0821			23.0	10.8 ~ 12.8			7.0	2.7

**PLEASE NOTE – NOT ALL STYLES & SIZES ARE HELD IN STOCK AT ALL TIMES. PLEASE CONTACT US TO CHECK AVAILABILITY. MINIMUM ORDER QUANTITIES APPLY.**

# STRUCTURAL RIVET SRHSS SERIES

<b>Head Type</b>	Dome Head
<b>Material (body / mandrel)</b>	Carbon Steel
<b>Finish (body / mandrel)</b>	Zinc Plate



Dimensions in millimetres.

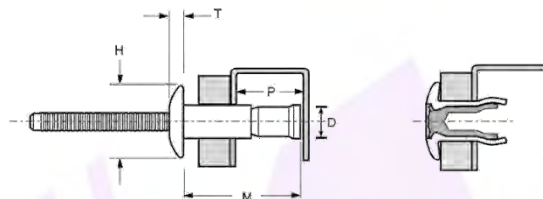
Part Number	Rivet Diameter (D) nom.	Hole Size	Length (M) max.	Grip Range	Head Diameter (H) max.	Head Thickness (T) max.	Standard Strength (Kn) TYP.	
							Shear	Tensile
SRHSS0812	6.4	6.7 ~ 6.9	13.7	1.5 ~ 3.5	13.4	2.6	10.5	8.8
SRHSS0813			15.0	2.8 ~ 4.8			12.0	8.8
SRHSS0815			17.0	4.8 ~ 6.8			12.5	8.8
SRHSS0817			19.0	6.8 ~ 8.8			14.0	8.8
SRHSS0819			21.0	8.8 ~ 10.8			16.0	8.8
SRHSS0821			23.0	10.8 ~ 12.8			16.0	8.8

**PLEASE NOTE – NOT ALL STYLES & SIZES ARE HELD IN STOCK AT ALL TIMES. PLEASE CONTACT US TO CHECK AVAILABILITY. MINIMUM ORDER QUANTITIES APPLY.**

## STRUCTURAL RIVET SRMAA SERIES



<b>Head Type</b>	Dome Head
<b>Material (body / mandrel)</b>	Aluminium / Aluminium
<b>Finish (body / mandrel)</b>	Polished / Natural



Dimensions in millimetres.

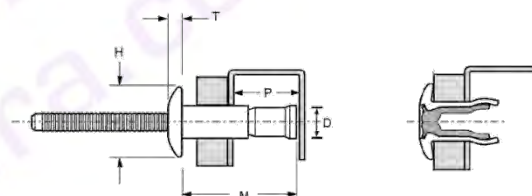
Part Number	Rivet Diameter (D) nom.	Hole Size	Rear Clearance (P) min.	Length (M) max.	Grip Range	Head Diameter (H) max.	Head Thickness (T) max.	Standard Strength (Kn) TYP.	
								Shear	Tensile
SRMAA0613	4.8	4.9 ~ 5.1	10.5	18.4	1.6 ~ 6.8	10.1	2.1	3.0	2.2
SRMAA0617			13.0	24.1	1.6 ~ 11.1				
SRMAA0817	6.4	6.6 ~ 7.0	13.0	24.67	2.0 ~ 9.5	13.4	2.9	6.0	4.2
SRMAA0824			18.1	34.7	2.0 ~ 15.8				

**PLEASE NOTE – NOT ALL STYLES & SIZES ARE HELD IN STOCK AT ALL TIMES. PLEASE CONTACT US TO CHECK AVAILABILITY. MINIMUM ORDER QUANTITIES APPLY.**

## STRUCTURAL RIVET SRMSS SERIES



<b>Head Type</b>	Dome Head
<b>Material (body / mandrel)</b>	Carbon Steel / Carbon Steel
<b>Finish (body / mandrel)</b>	Zinc Plate / Zinc Plate



Dimensions in millimetres.

Part Number	Rivet Diameter (D) nom.	Hole Size	Rear Clearance (P) min.	Length (M) max.	Grip Range	Head Diameter (H) max.	Head Thickness (T) max.	Standard Strength (Kn) TYP.	
								Shear	Tensile
SRMSS0613	4.8	4.9 ~ 5.1	10.5	18.2	1.6 ~ 6.9	10.1	10.1	6.3	5.1
SRMSS0617			13.5	24.6	1.6 ~ 11.1				
SRMSS0817	6.4	6.6 ~ 7.0	12.2	23.7	2.0 ~ 9.5	13.4	13.4	11.7	10.4
SRMSS0824			16.4	32.9	2.0 ~ 15.9				

**PLEASE NOTE – NOT ALL STYLES & SIZES ARE HELD IN STOCK AT ALL TIMES. PLEASE CONTACT US TO CHECK AVAILABILITY. MINIMUM ORDER QUANTITIES APPLY.**

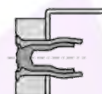
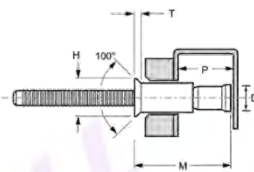
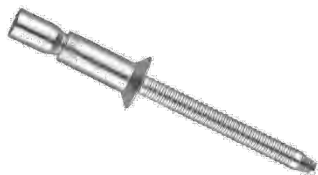
**Dafra Fastening Systems - Rivets Rivnuts & Tooling**  
7 Joyner Street Moorabbin Vic 3189

Phone (03) 9555 6872 | Fax (03) 9555 0803  
Email sales@dafra.com.au | [dafra.com.au](http://dafra.com.au)

**#DAFRA**  
in Riveting Stuff  
[dafra.com.au](http://dafra.com.au)

## STRUCTURAL RIVET SRMSSC SERIES

<b>Head Type</b>	Countersunk Head
<b>Material (body / mandrel)</b>	Carbon Steel / Carbon Steel
<b>Finish (body / mandrel)</b>	Zinc Plate / Zinc Plate



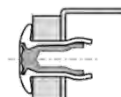
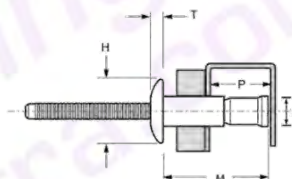
Dimensions in millimetres.

Part Number	Rivet Diameter (D) nom.	Hole Size	Rear Clearance (P) min.	Length (M) max.	Grip Range	Head Diameter (H) max.	Head Thickness (T) max.	Standard Strength (Kn) TYP.	
								Shear	Tensile
SRMSSC0615	4.8	4.9 ~ 5.1	10.5	20.0	3.2 ~ 8.4	8.3	2.2	6.3	5.1
SRMSSC0619			13.5	26.3	3.2 ~ 12.2				
SRMSSC0821	6.4	6.6 ~ 7.0	12.2	26.4	3.2 ~ 12.0	10.1	2.4	11.7	10.4

**PLEASE NOTE – NOT ALL STYLES & SIZES ARE HELD IN STOCK AT ALL TIMES. PLEASE CONTACT US TO CHECK AVAILABILITY. MINIMUM ORDER QUANTITIES APPLY.**

## STRUCTURAL RIVET SRMSTST SERIES

<b>Head Type</b>	Dome Head
<b>Material (body / mandrel)</b>	Stainless Steel / Stainless Steel
<b>Finish (body / mandrel)</b>	Polished / Natural



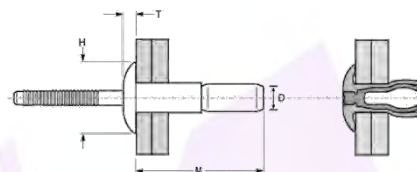
Dimensions in millimetres.

Part Number	Rivet Diameter (D) nom.	Hole Size	Rear Clearance (P) min.	Length (M) max.	Grip Range	Head Diameter (H) max.	Head Thickness (T) max.	Standard Strength (Kn) TYP.	
								Shear	Tensile
SRMSTST0613	4.8	4.9 ~ 5.1	10.5	18.2	1.6 ~ 6.9	10.1	2.1	6.4	5.1
SRMSTST0617			13.5	24.5	1.6 ~ 11.1				
SRMSTST0817	6.4	6.6 ~ 7.0	12.2	23.7	2.0 ~ 9.5	13.4	2.9	11.7	10.4
SRMSTST0824			16.4	33.0	2.0 ~ 15.9				

**PLEASE NOTE – NOT ALL STYLES & SIZES ARE HELD IN STOCK AT ALL TIMES. PLEASE CONTACT US TO CHECK AVAILABILITY. MINIMUM ORDER QUANTITIES APPLY.**

## STRUCTURAL RIVET SRISS SERIES

<b>Head Type</b>	Dome Head
<b>Material (body / mandrel)</b>	Carbon Steel / Carbon Steel
<b>Finish (body / mandrel)</b>	Zinc Plate / Zinc Plate



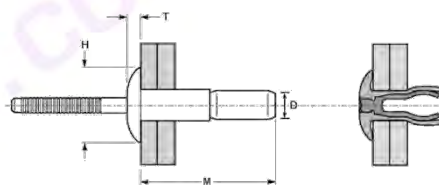
Dimensions in millimetres.

Part Number	Rivet Diameter (D) nom.	Hole Size	Length (M) max.	Grip Range	Head Diameter (H) max.	Head Thickness (T) max.	Standard Strength (Kn) TYP.	
							Shear	Tensile
SRISS0604	4.8	4.9 ~ 5.1	18.2	1.57 ~ 6.35	10.1	2.2	5.8	5.3
SRISS0607			24.6	1.57 ~ 11.10				
SRISS0806	6.4	6.6 ~ 6.9	25.3	2.03 ~ 9.53	13.4	3.0	11.1	9.8
SRISS0810			35.6	2.03 ~ 15.88				
SRISS121238	9.8	10.0 ~ 10.4	42.0	3.0 ~ 14.2	20.0	4.5	13.1	8.5

**PLEASE NOTE – NOT ALL STYLES & SIZES ARE HELD IN STOCK AT ALL TIMES. PLEASE CONTACT US TO CHECK AVAILABILITY. MINIMUM ORDER QUANTITIES APPLY.**

## STRUCTURAL RIVET SRIAA SERIES

<b>Head Type</b>	Dome Head
<b>Material (body / mandrel)</b>	AL Alloy / AL Alloy
<b>Finish (body / mandrel)</b>	Polished / Polished



Dimensions in millimetres.

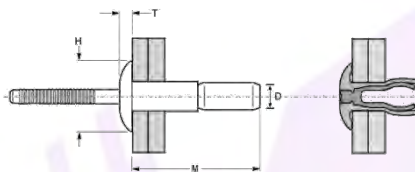
Part Number	Rivet Diameter (D) nom.	Hole Size	Length (M) max.	Grip Range	Head Diameter (H) max.	Head Thickness (T) max.	Standard Strength (Kn) TYP.	
							Shear	Tensile
SRIAA0604	4.8	4.9 ~ 5.1	18.2	1.57 ~ 6.35	10.1	2.2	5.8	5.3
SRIAA0607			24.6	1.57 ~ 11.10				
SRIAA0806	6.4	6.6 ~ 6.9	25.3	2.03 ~ 9.53	13.4	3.0	11.1	9.8
SRIAA0810			35.6	2.03 ~ 15.88				
SRIAA121238	9.8	10.0 ~ 10.4	42.0	3.0 ~ 14.2	20.0	4.5	13.1	8.5

**PLEASE NOTE – NOT ALL STYLES & SIZES ARE HELD IN STOCK AT ALL TIMES. PLEASE CONTACT US TO CHECK AVAILABILITY. MINIMUM ORDER QUANTITIES APPLY.**

## STRUCTURAL RIVET SRISTST SERIES



<b>Head Type</b>	Dome Head
<b>Material (body / mandrel)</b>	Stainless Steel / Stainless Steel
<b>Finish (body / mandrel)</b>	Polished / Natural



Dimensions in millimetres

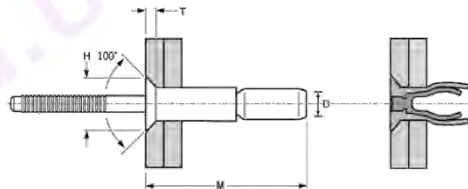
Part Number	Rivet Diameter (D) nom.	Hole Size	Length (M) max.	Grip Range	Head Diameter (H) max.	Head Thickness (T) max.	Standard Strength (Kn) TYP.	
							Shear	Tensile
SRISTST0604	4.8	4.9 ~ 5.1	18.2	1.57 ~ 6.35	10.2	2.3	5.7	4.4
SRISTST0607			25.5	1.57 ~ 11.10				
SRISTST0806	6.4	6.6 ~ 7.0	30.0	2.03 ~ 9.53	13.5	3.0	10.6	8.2
SRISTST0810			36.4	2.03 ~ 15.88				

**PLEASE NOTE – NOT ALL STYLES & SIZES ARE HELD IN STOCK AT ALL TIMES. PLEASE CONTACT US TO CHECK AVAILABILITY. MINIMUM ORDER QUANTITIES APPLY.**

## STRUCTURAL RIVET SRISSC SERIES



<b>Head Type</b>	Countersunk Head
<b>Material (body / mandrel)</b>	Carbon Steel / Carbon Steel
<b>Finish (body / mandrel)</b>	Zinc Plate / Zinc Plate



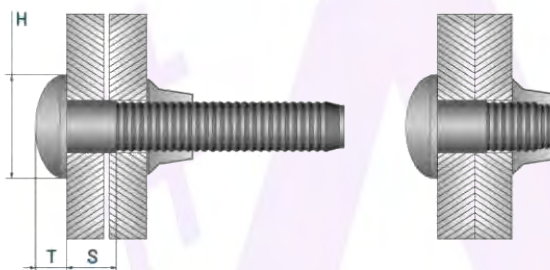
Dimensions in millimetres.

Part Number	Rivet Diameter (D) nom.	Hole Size	Length (M) max.	Grip Range	Head Diameter (H) max.	Head Thickness (T) max.	Standard Strength (Kn) TYP.	
							Shear	Tensile
SRISSC0606	4.8	4.9 ~ 5.1	20.0	3.2 ~ 8.4	8.8	2.2	5.7	4.4
SRISSC0610			24.0	7.7 ~ 12.7				
SRISSC0808	6.4	6.6 ~ 7.0	27.0	4.1 ~ 12.1	10.4	2.4	10.6	8.2
SRISSC0812			37.0	10.5 ~ 18.4				

**PLEASE NOTE – NOT ALL STYLES & SIZES ARE HELD IN STOCK AT ALL TIMES. PLEASE CONTACT US TO CHECK AVAILABILITY. MINIMUM ORDER QUANTITIES APPLY.**

## LOCK BOLT LBBS SERIES

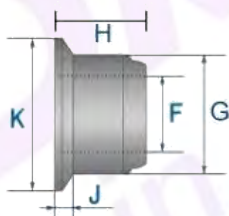
<b>Head Type</b>	Brazier Head
<b>Material</b>	Carbon Steel
<b>Finish</b>	Zinc Plate



Dimensions in millimetres.

Part Number	Rivet Diameter (D) nom.	Hole Size	Shank Length (S) min.	Grip Range	Head Diameter (H) max.	Head Thickness (T) max.	Standard Strength (Kn) TYP.	
							Shear	Tensile
LBBS0610	4.8	5.0 ~ 5.2	2.3	1.6 ~ 15.9	10.0	3.4	8.2	10.0
LBBS0620			8.4	7.9 ~ 31.7				
LBSS0810	6.4	6.6 ~ 6.8	2.2	1.6 ~ 15.9	13.3	4.1	11.8	16.0
LBSS0820			9.1	7.9 ~ 31.7				

**PLEASE NOTE – NOT ALL STYLES & SIZES ARE HELD IN STOCK AT ALL TIMES. PLEASE CONTACT US TO CHECK AVAILABILITY. MINIMUM ORDER QUANTITIES APPLY.**



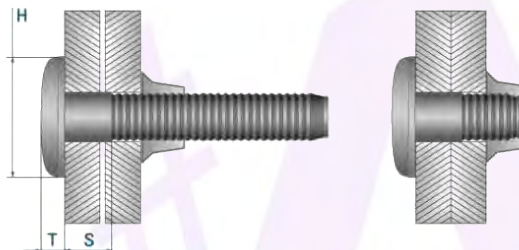
<b>Collar Type</b>	Flange
<b>Material</b>	Carbon Steel
<b>Finish</b>	Zinc Plate

Part Number	Pin Diameter nom.	F MAX	G MAX	H MAX	J MAX	K MAX
LBCS0600	4.8	5.0	7.0	7.2	1.6	10.0
LBCS0800	6.4	6.8	10.4	9.7	2.0	13.2

**PLEASE NOTE – NOT ALL STYLES & SIZES ARE HELD IN STOCK AT ALL TIMES. PLEASE CONTACT US TO CHECK AVAILABILITY. MINIMUM ORDER QUANTITIES APPLY.**

## LOCK BOLT LBTS SERIES

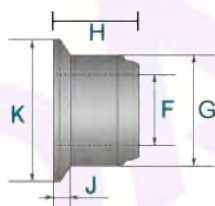
<b>Head Type</b>	Truss Head
<b>Material</b>	Carbon Steel
<b>Finish</b>	Zinc Plate



Dimensions in millimetres.

Part Number	Rivet Diameter (D) nom.	Hole Size	Shank Length (S) min.	Grip Range	Head Diameter (H) max.	Head Thickness (T) max.	Standard Strength (Kn) TYP.	
							Shear	Tensile
LBTS0610	4.8	5.0 ~ 5.2	2.3	1.6 ~ 15.9	11.9	2.8	8.2	10.0
LBTS0620			8.4	7.9 ~ 31.7				
LBTS0810	6.4	6.6 ~ 6.8	2.2	1.6 ~ 15.9	15.1	3.1	11.8	16.0
LBTS0820			9.1	7.9 ~ 31.7				

**PLEASE NOTE – NOT ALL STYLES & SIZES ARE HELD IN STOCK AT ALL TIMES. PLEASE CONTACT US TO CHECK AVAILABILITY. MINIMUM ORDER QUANTITIES APPLY.**



<b>Collar Type</b>	Flange
<b>Material</b>	Carbon Steel
<b>Finish</b>	Zinc Plate

Part Number	Pin Diameter nom.	F MAX	G MAX	H MAX	J MAX	K MAX
LBCS0600	4.8	5.0	7.0	7.2	1.6	10.0
LBCS0800	6.4	6.8	10.4	9.7	2.0	13.2

**PLEASE NOTE – NOT ALL STYLES & SIZES ARE HELD IN STOCK AT ALL TIMES. PLEASE CONTACT US TO CHECK AVAILABILITY. MINIMUM ORDER QUANTITIES APPLY.**